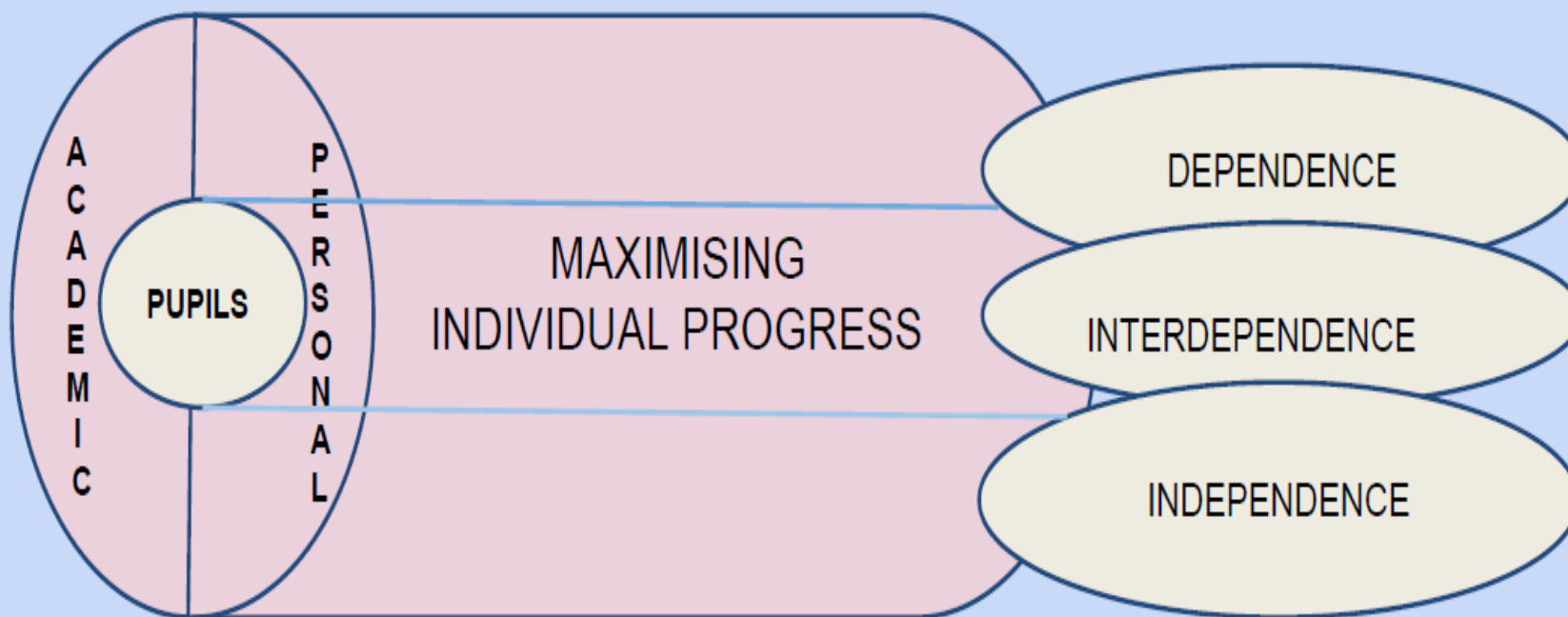


# Milestone Academy

Pupil Outcomes 2015-16

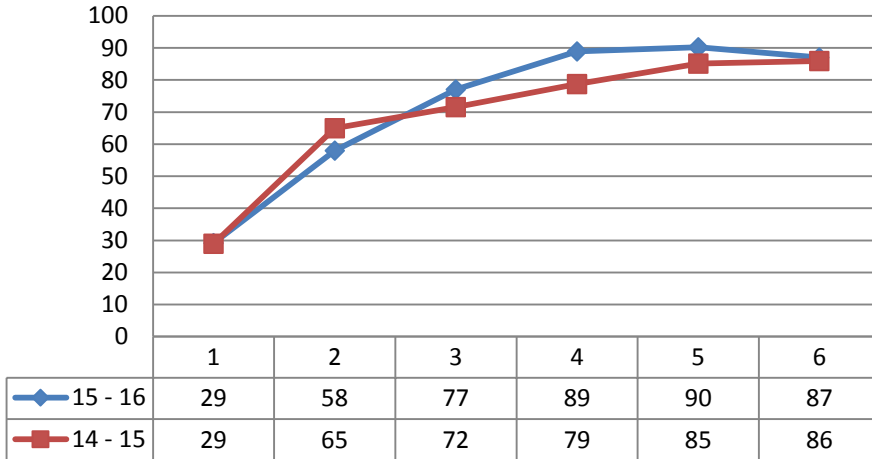
# THE INTENDED INDIVIDUAL OUTCOMES OF THE FRAMEWORK PLACED AROUND MILESTONE PUPILS

← AGES 2 - 7 - 11 - 16 - 18 - 25 →

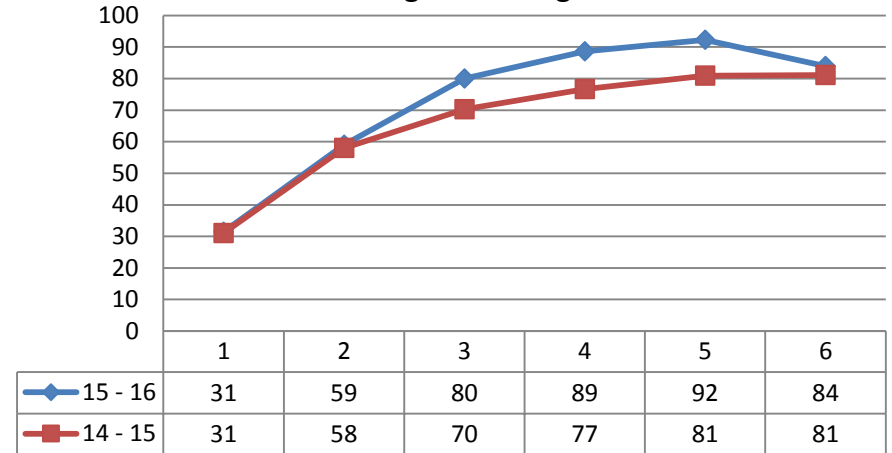


# Yr 1-11 outcomes

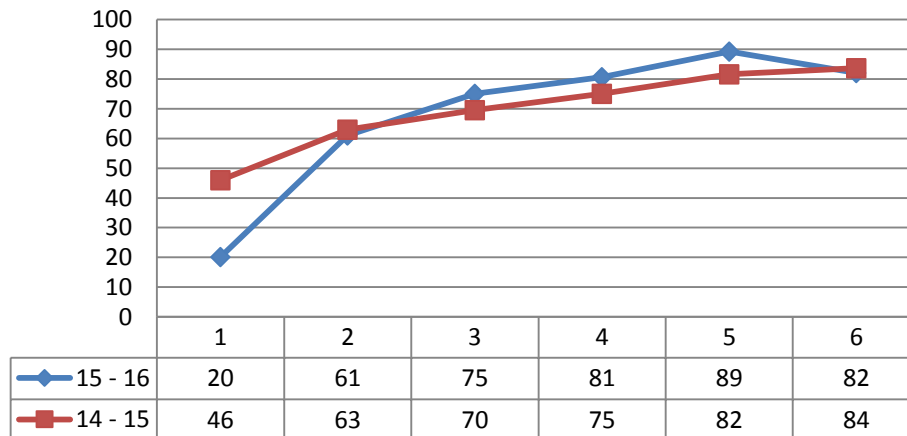
**Year 1-11 - On track for End of Year target  
English Reading**



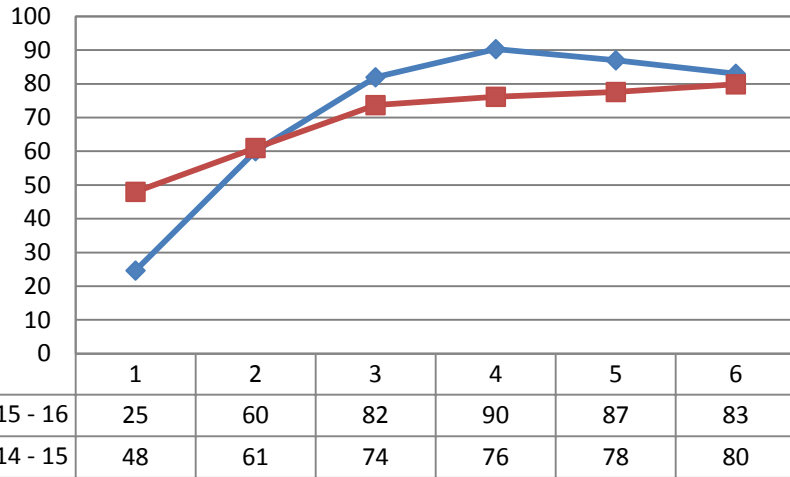
**Year 1-11 - On Track for End of Year Target  
English Writing**



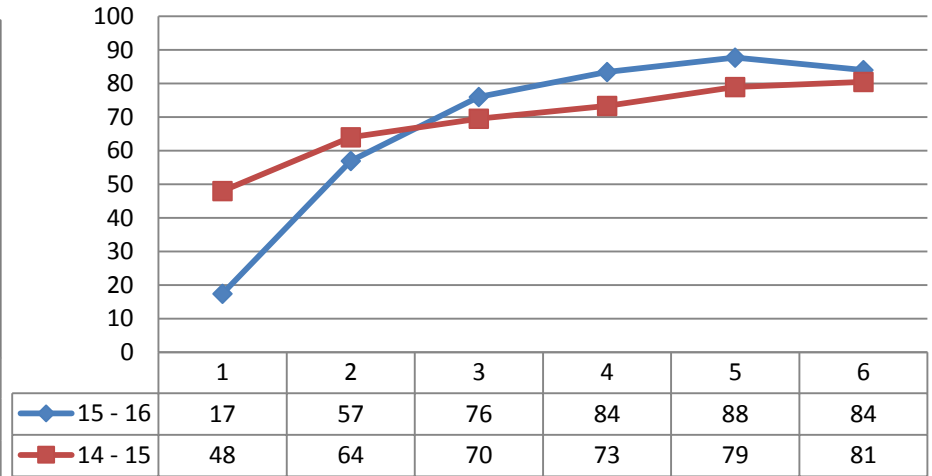
**Year 1-11 - On track for End of Year Target  
Maths**



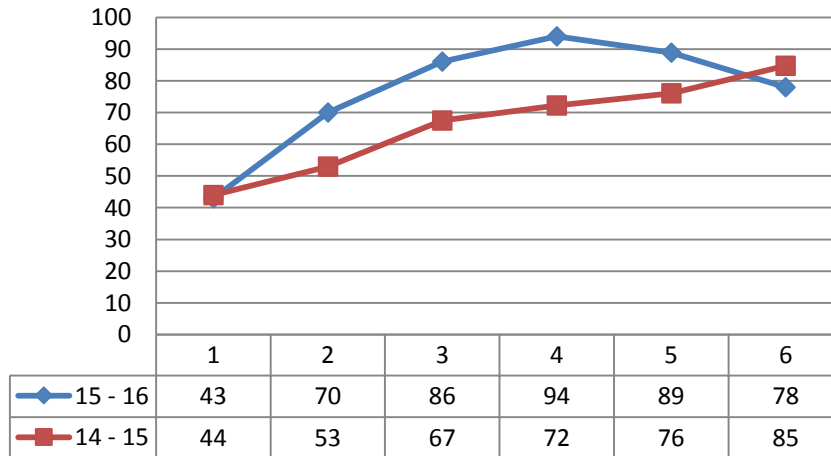
**Year 1-11 - On track for End of Year target  
English Speaking**



**Year 1-11 - On track for End of Year target  
English Listening**

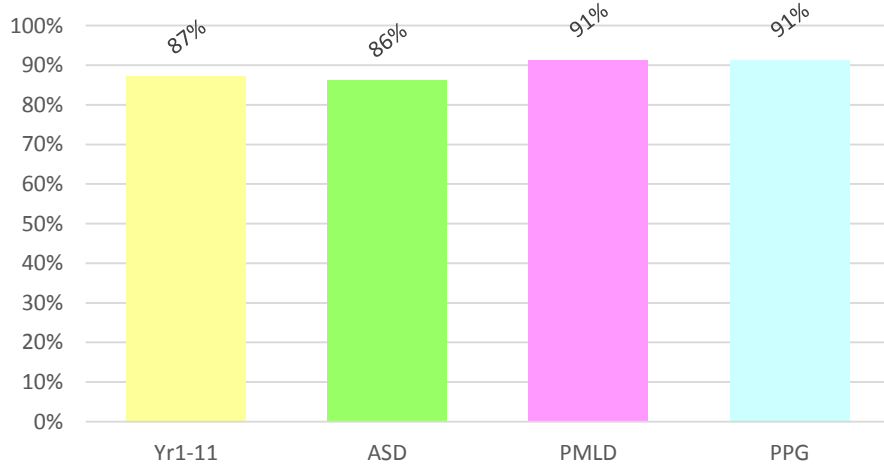


**Year 1-11 - On track for End of Year target  
English Speaking & Listening**

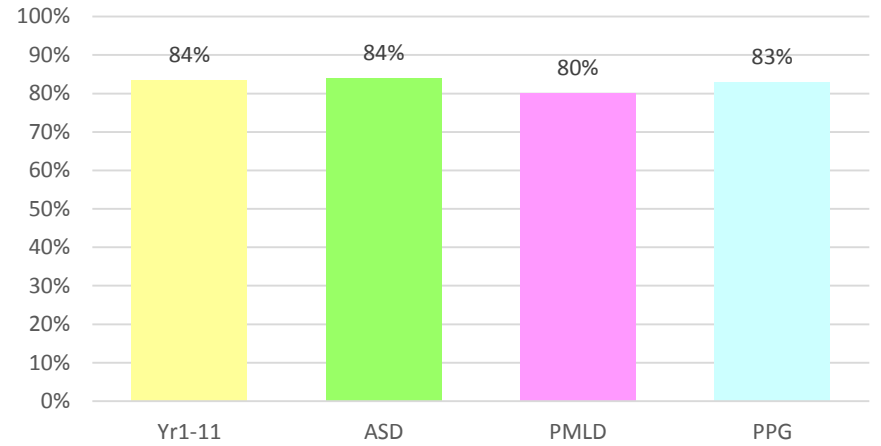


# Vulnerable group Analysis

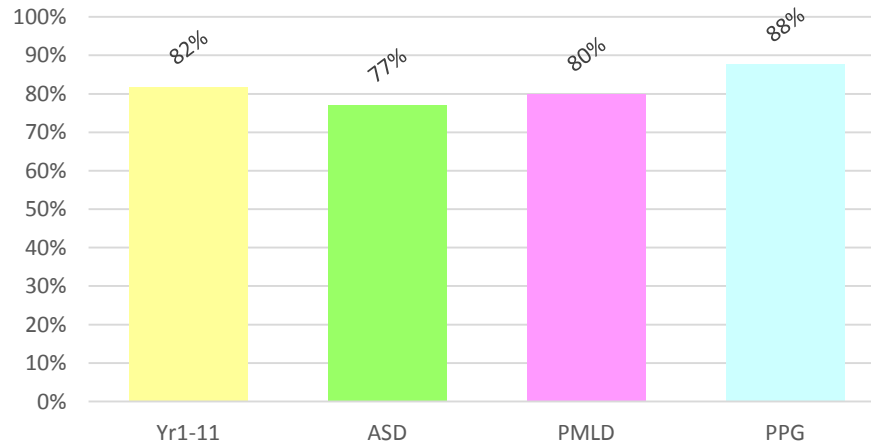
## End of Year Progress Reading



## End of Year Progress Writing

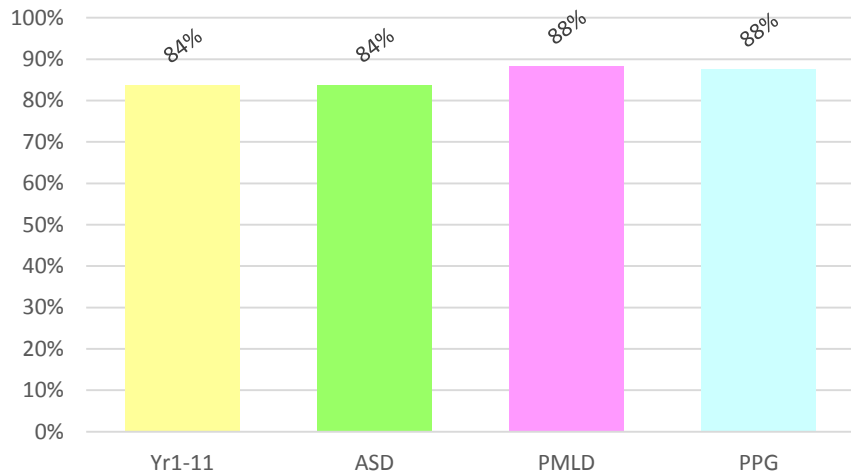


## End of Year Progress Maths

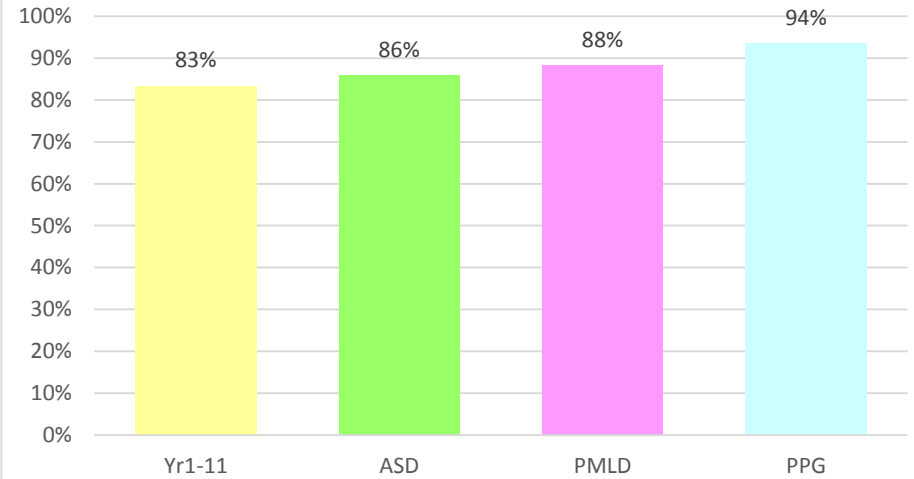


# Cont...

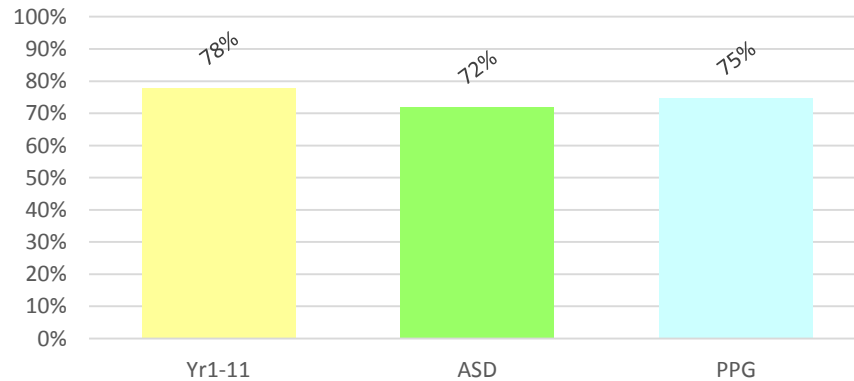
## End of Year Progress Speaking



## End of Year Progress Listening



## End of Year Progress Speaking & Listening



# Overall results from 2015-2016 Functional Skills Exams at Entry Levels 1-3

	<b>Reading</b>	<b>Writing</b>	<b>S &amp; L</b>	<b>Maths</b>	<b>ICT</b>
Pass Rate for 6th form students	90%	83%	95%	73%	94%
Pass Rate for KS4 students	90%	63%	100%	42%	N/A

# Milestone Academy Coursework Accredited Overview 2015-16

## Phase 3 & 4

**100% pass rate for all accredited coursework**

<b>Qualification</b>	<b>Subject Name</b>	<b>Awarding Body</b>	<b>Level</b>	<b>Year Groups</b>	<b>Number taken</b>	<b>Number passed</b>
<b>Level 1</b>	<b>Introduction to Horticulture Award or Certificate</b>	<b>Ascentis</b>	<b>1</b>	<b>10 &amp; 11</b>	<b>11</b>	<b>11</b>
<b>Entry Level</b>	<b>Introduction to Construction Skills Award</b>	<b>Ascentis</b>	<b>Entry 2</b>	<b>13</b>	<b>5</b>	<b>5</b>
<b>Entry Level</b>	<b>Healthy Living and Fitness</b>	<b>WJEC</b>	<b>Entry 2 &amp; 3</b>	<b>13 &amp; 14</b>	<b>5</b>	<b>5</b>
<b>Entry Level</b>	<b>Personal Progress Award, Extended Award, Certificate or Diploma</b>	<b>ASDAN</b>	<b>Entry 1</b>	<b>14</b>	<b>10</b>	<b>10</b>
<b>Entry Level</b>	<b>Personal and Social Development Award, Extended Award, Certificate or Diploma</b>	<b>ASDAN</b>	<b>Entry 1, 2 &amp; 3</b>	<b>14</b>	<b>11</b>	<b>11</b>